



Name: \_\_\_\_\_ D.O.B.: \_\_\_\_\_

Allergy to: \_\_\_\_\_

Weight: \_\_\_\_\_ lbs.

**Asthma:** [ ] Yes (higher risk for a severe reaction) [ ] No

### For a suspected or active food allergy reaction:

**PLACE  
STUDENT'S  
PICTURE  
HERE**

## FOR ANY OF THE FOLLOWING SEVERE SYMPTOMS

[ ] If checked, give epinephrine immediately if the allergen was definitely eaten, even if there are no symptoms.



### LUNG

Short of breath, wheezing, repetitive cough



### HEART

Pale, blue, faint, weak pulse, dizzy



### THROAT

Tight, hoarse, trouble breathing/swallowing



### MOUTH

Significant swelling of the tongue and/or lips



### SKIN

Many hives over body, widespread redness



### GUT

Repetitive vomiting or severe diarrhea



### OTHER

Feeling something bad is about to happen, anxiety, confusion

**OR A COMBINATION** of mild or severe symptoms from different body areas.

**NOTE:** Do not depend on antihistamines or inhalers (bronchodilators) to treat a severe reaction. **Use Epinephrine.**



- INJECT EPINEPHRINE IMMEDIATELY.**
- Call 911.** Request ambulance with epinephrine.
  - Consider giving additional medications (following or with the epinephrine):
    - » Antihistamine
    - » Inhaler (bronchodilator) if asthma
  - Lay the student flat and raise legs. If breathing is difficult or they are vomiting, let them sit up or lie on their side.
  - If symptoms do not improve, or symptoms return, more doses of epinephrine can be given about 5 minutes or more after the last dose.
  - Alert emergency contacts.
  - Transport student to ER even if symptoms resolve. Student should remain in ER for 4+ hours because symptoms may return.

**NOTE: WHEN IN DOUBT, GIVE EPINEPHRINE.**

## MILD SYMPTOMS

[ ] If checked, give epinephrine immediately for ANY symptoms if the allergen was likely eaten.



### NOSE

Itchy/runny nose, sneezing



### MOUTH

Itchy mouth



### SKIN

A few hives, mild itch



### GUT

Mild nausea/discomfort



- GIVE ANTIHISTAMINES, IF ORDERED BY PHYSICIAN**
- Stay with student; alert emergency contacts.
- Watch student closely for changes. If symptoms worsen, **GIVE EPINEPHRINE.**

## MEDICATIONS/DOSES

Epinephrine Brand: \_\_\_\_\_

Epinephrine Dose: [ ] 0.15 mg IM [ ] 0.3 mg IM

Antihistamine Brand or Generic: \_\_\_\_\_

Antihistamine Dose: \_\_\_\_\_

Other (e.g., inhaler-bronchodilator if asthmatic): \_\_\_\_\_

PARENT/GUARDIAN AUTHORIZATION SIGNATURE

DATE

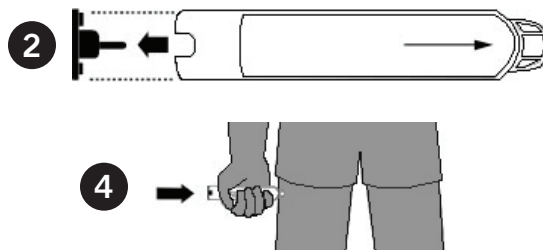
PHYSICIAN/HCP AUTHORIZATION SIGNATURE

DATE



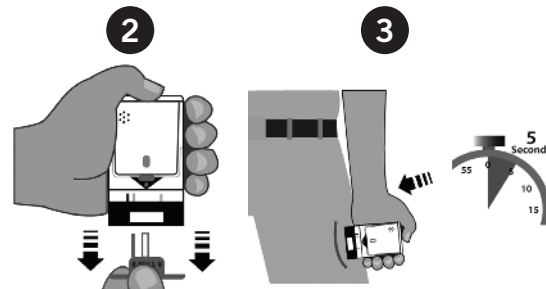
## EPIPEN® (EPINEPHRINE) AUTO-INJECTOR DIRECTIONS

1. Remove the EpiPen Auto-Injector from the plastic carrying case.
2. Pull off the blue safety release cap.
3. Swing and firmly push orange tip against mid-outer thigh.
4. Hold for approximately 10 seconds.
5. Remove and massage the area for 10 seconds.



## AUVI-Q™ (EPINEPHRINE INJECTION, USP) DIRECTIONS

1. Remove the outer case of Auvi-Q. This will automatically activate the voice instructions.
2. Pull off red safety guard.
3. Place black end against mid-outer thigh.
4. Press firmly and hold for 5 seconds.
5. Remove from thigh.



## ADRENACLICK®/ADRENACLICK® GENERIC DIRECTIONS

1. Remove the outer case.
2. Remove grey caps labeled "1" and "2".
3. Place red rounded tip against mid-outer thigh.
4. Press down hard until needle penetrates.
5. Hold for 10 seconds. Remove from thigh.



## OTHER DIRECTIONS/INFORMATION (may self-carry epinephrine, may self-administer epinephrine, etc.):

### Consent Information:

I, the parent/guardian of \_\_\_\_\_, request that this school Food Allergy Plan be used to guide the care of my child, I agree to:

1. Provide necessary supplies, equipment and medications
2. Notify the school of any changes in the student's health status
3. Notify the school and complete new consent for changes in orders from the student's healthcare provider
4. Authorize the school to communicate with the primary care provider/specialist as needed.
5. Allow school staff interacting directly with my child to be informed about his/her special needs while at school.

Treat student before calling Emergency Contacts. The first signs of a reaction can be mild, but symptoms can get worse quickly.

## EMERGENCY CONTACTS — CALL 911

RESCUE SQUAD: \_\_\_\_\_

DOCTOR: \_\_\_\_\_ PHONE: \_\_\_\_\_

PARENT/GUARDIAN: \_\_\_\_\_ PHONE: \_\_\_\_\_

## OTHER EMERGENCY CONTACTS

NAME/RELATIONSHIP: \_\_\_\_\_

PHONE: \_\_\_\_\_

NAME/RELATIONSHIP: \_\_\_\_\_

PHONE: \_\_\_\_\_

PARENT/GUARDIAN AUTHORIZATION SIGNATURE

DATE